



DOKANIYA WOODCRAFTS



Vision

Our vision is to emerge as India's foremost export house specializing in high-quality furniture and home décor, offering world-class products alongside innovative flat-pack solutions. We are committed to advancing efficiency and achieving sustained growth annually, while upholding responsibility for social and environmental sustainability.



DWC - Brief Company Information

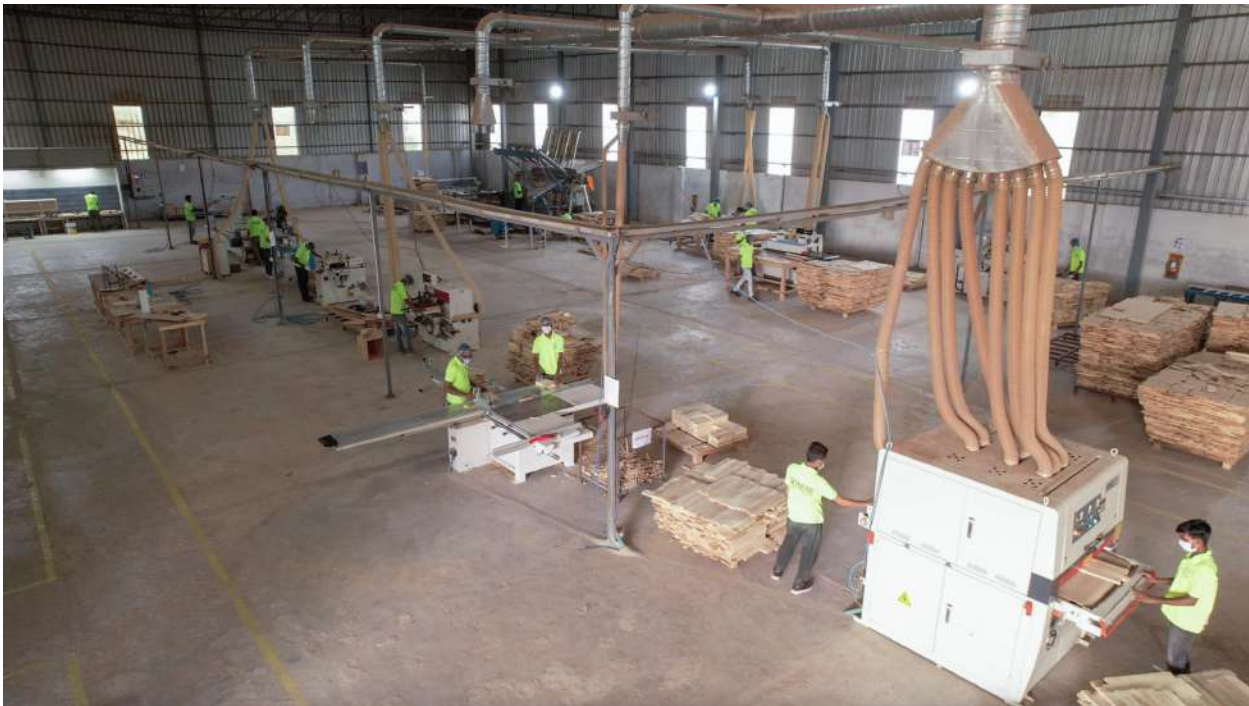
- **Established:** 2022
- **Location:** Sitapur and Moradabad, Uttar Pradesh, India
- **Parent Company:** Dokaniya Group (Established in the 1970)
- **Industry:** Manufacturing and Export of Wooden Furniture & Home Decor
- **Total Number of Factories:** 02 Facility (Wood & Metal Separately)
- **Design and R&D:** In house CAD designers and R&D team
- **Total Factory Area:** 2,50,000 Sqft
- **Factory turnover:** USD 0.179 Million
- **Existing client:** Ross Stores
- **Total Container Capacity:** 62x40' HC / Month
- **Available Capacity:** 55x40' HC / Month
- **Name the Material In-house:** Wood (Domestic & Imported), Metal , Marble, Glass etc
- **FSC/PEFC wood & veneer list:** Spruce, Pine, Oak, Acacia, Mango, Teak
- **Seasoning/Chemical capacity:** 25,000 CFT/Month
- **Factory Assets :** Saw Mill 05-vertical and 02-Horizontal, 02-Double Side Planner, 02-Rip Saw, Clamp Carrier, Finger Joint cutting and pasting machine, Power max with cutting spiral, Tenon, Mortise, Dovetail, Multi-boring, 06-Mig & 04-Argon welding machine, Pipe Bending Machine, Powder Coating and Oven, 02-Sanding booth, 02-Shading booth, 25000 Sqft Warehouse, 24x7 electricity line & 03 DG, 02-Forklift

Future and Ongoing projects: Expanding to a new unit 4.5 lakh square feet, equipped with a conveyor finishing line by 2025. Additionally, we are occupying 2,000 hectares of forest land for FSC-FM certification to maintain sustainability in our supply chain. To date, we have responsibly managed 600 hectares of forest land.

• **Certification Available:**



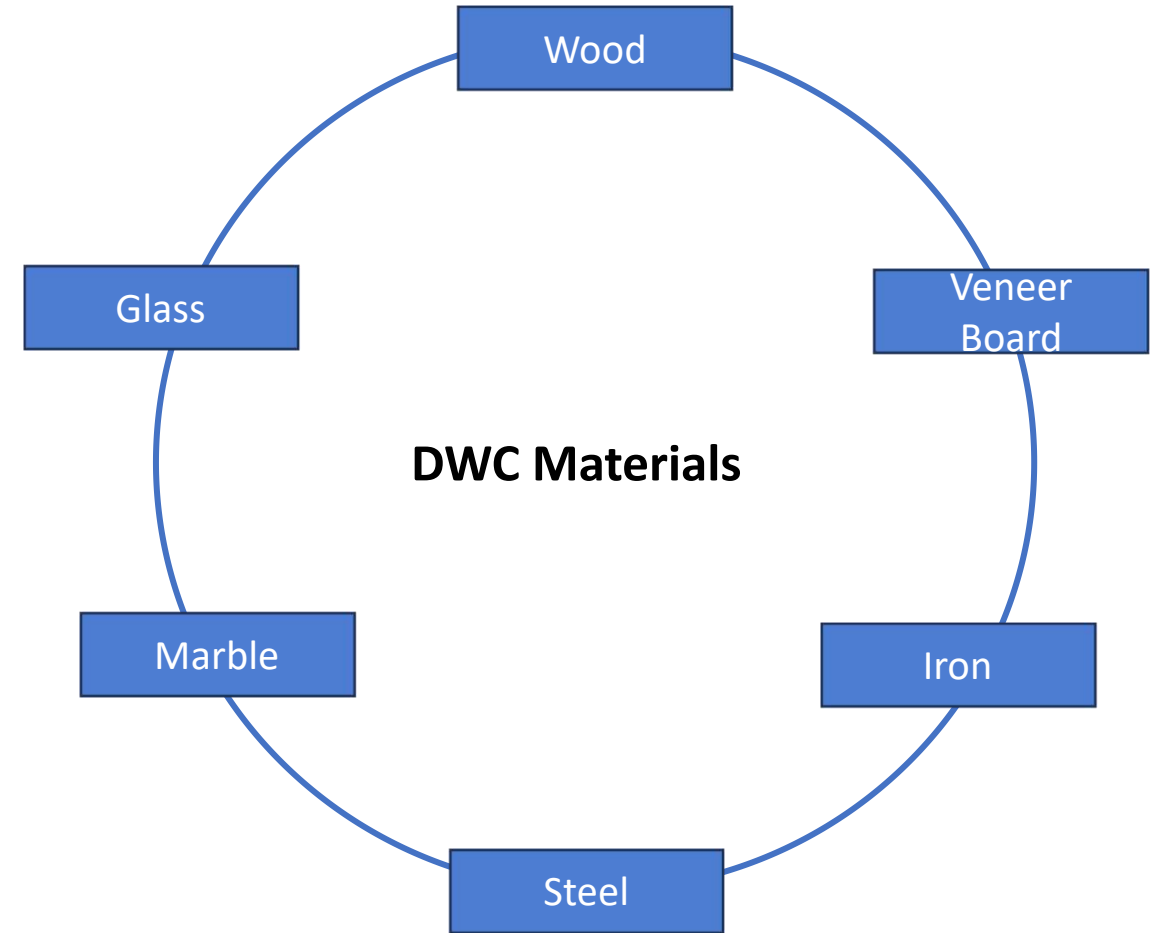
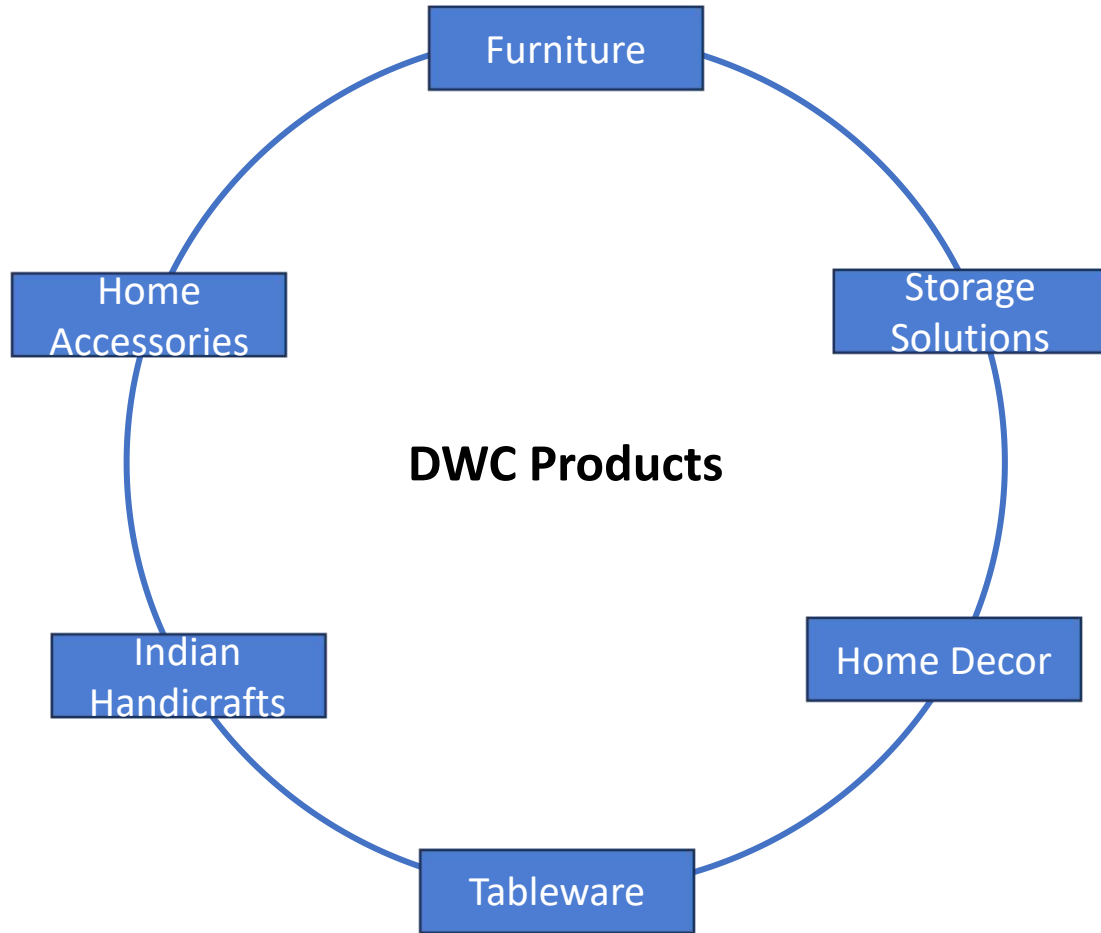
DWC Factory Walk



About Us



M/s Dokaniya Wood Crafts is a subsidiary of the esteemed Dokaniya Group, renowned for over four decades in handicraft exports. We specialize in manufacturing and exporting a diverse range of wooden products, catering to various segments.



PEFC & FSC certified Factory – Working with

- Indian woods – Mango, Acacia, Arjun, Indian Elm (Kanju).
- Imported Pine, Spruce, Beech, Oak, Ash, Oak
- Plywood, MDF, Particle Board, Veneer Board



Manufacturing Unit - Metal



- Working with Pipe, Rod, Sheets and Extrusion forms of Galvanized Iron, Mild Steel, Stainless Steel, Aluminum, Brass and Copper.
- Making products across all categories of Home Furnishing.





Total Quality Management

- Implementing end to end Quality Management System.
- Integrating all areas into one system.
- Using 5S, Kaizen, Poka-yoke and other established methodology to ensure 100% First Time Right quality.
- Enhancing competence – upgrading existing resources through trainings and knowledge sharing as well as bringing in highly trained external resources.
- Using Six-Sigma Lean manufacturing DMAIC methodology to improve efficiencies.

Role in Sustainability



**Ethical sourcing –
the root of
success**

“Sustainability is becoming a business imperative; doing nothing is no longer an option. It is about securing your business for the future.”
PricewaterhouseCoopers

Forest Management

Aiming for 100% use of Certified forest wood.

Existing – FSC COC

Future – Forest Management and EUDR



WATER CONSERVATION

Aiming for 200% of water consumed in process.

Existing – Rain water conservation complete. Will be able to conserve 5 Million Liters of water every year.

Future – Investing in STPs that will allow processed water to be used in production processes thereby further reducing ground water dependency.
Investing in dry finishing processes like PVD that replaces electro-plated finish.



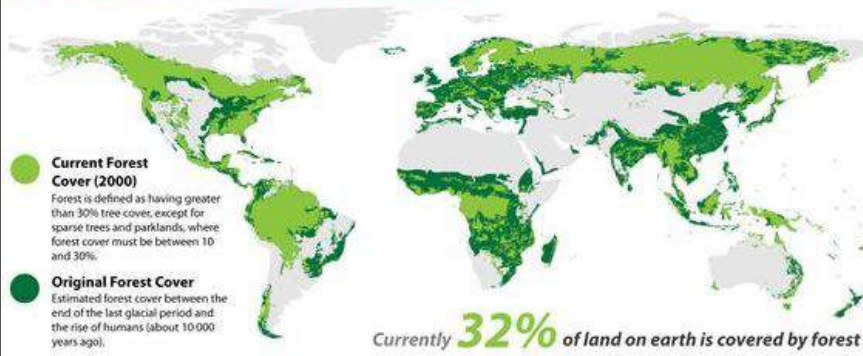
CHEMICAL MANAGEMENT

Aiming for reduction of chemical usage

Existing – All chemicals used in factory are Aromatics and BPA free.

Future – Investing in processes to further reduce use of chemicals. Phosphating of Iron articles converted to Dry shot blasting process. Invested in PVD to replace Electro-plating thereby reducing use of chemicals.

How has global forest cover changed over time?



Why Choose Us ??

- **Ethically-Sourced Raw Materials:** We procure our raw materials from legal and sustainable sources, ensuring environmental responsibility throughout our supply chain.
- **Technical Supervision in Fabrication and Assembly:** Our manufacturing processes are overseen by technical experts to guarantee precision and quality in fabrication and assembly.
- **In-House Technical Testing:** Prior to shipment, all our products undergo rigorous in-house technical testing to meet stringent quality standards.
- **Environmental Commitment:** For every container shipped, we contribute to reforestation efforts by planting two tree, promoting environmental sustainability.
- **Customized Procurement for Cost Efficiency:** By procuring and cutting wood planks to exact product specifications, we optimize costs for large-scale projects without compromising quality, as we are not depend on market timber size and supply chain.
- **Reliable Delivery Schedule:** Our efficient procurement practices ensure timely delivery, mitigating delays often caused by market fluctuations in wood availability.

Join us and become part of a sustainable legacy while fostering prosperous business relationships



Contact Us

For inquiries and partnerships, please reach out to:

Address: Gata No. 21, Vill. Uljapur Lakhimpur Rd. Sitapur
261121(U.P), India

Phone: +91 8953648888

Email: Ankit@dokaniyawood.com
info@dokaniyawood.com

Website: <https://dokaniyawood.com/>



Thank You

Questions Are Welcome